
OrbitGPS User Guide

Bluetooth GPS Receiver

Part Number: G2010



25 Old King's Highway North
Suite 13, #128
Darien, CT 06820
www.OrbitGPS.com

© 2008 OrbitGPS LLC All rights reserved.

No part of this publication may be reproduced or used in any form, or by any electrical or mechanical means, without permission in writing from OrbitGPS LLC (OrbitGPS). This includes electronic or mechanical means, such as photocopying, recording, or information storage and retrieval systems. The material in this manual is subject to change without notice.

The software is provided strictly on an “as is” basis. All software, including firmware, furnished to the user is on a licensed basis. OrbitGPS grants to the user a non-transferable and non-exclusive license to use each software or firmware program delivered hereunder (licensed program). Except as noted below, such license may not be assigned, sublicensed, or otherwise transferred by the user without prior written consent of OrbitGPS. No right to copy a licensed program in whole or in part is granted, except as permitted under copyright law. The user shall not modify, merge, or incorporate any form or portion of a licensed program with other program material, create a derivative work from a licensed program, or use a licensed program in a network without written permission from OrbitGPS. The user agrees to maintain OrbitGPS’s copyright notice on the licensed programs delivered hereunder, and to include the same on any authorized copies it makes, in whole or in part.

The user agrees not to decompile, disassemble, decode, or reverse engineer any licensed program delivered to the user or any portion thereof.

OrbitGPS reserves the right to make changes to any software or product to improve reliability, function, or design.

OrbitGPS does not assume any product liability arising out of, or in connection with, the application or use of any product, circuit, or application described herein.

No license is granted, either expressly or by implication, estoppel, or otherwise under any OrbitGPS LLC intellectual property rights. An implied license only exists for equipment, circuits, and subsystems contained in OrbitGPS products.

Other product names mentioned in this manual may be trademarks or registered trademarks of their respective companies and are hereby acknowledged.

OrbitGPS LLC

25 Old King's Highway North, Suite 13
#128
Darien, CT 06620
United States of America
www.OrbitGPS.com

Table of Contents

Revision History.....	Error! Bookmark not defined.
Table of Contents	2
Introduction	2
Basic Guidelines.....	2
Getting Started.....	4
Care and Maintenance	10
GlobalPoint GPS Software	11
Specifications.....	20
Regulatory Information	22
Warranty	Error! Bookmark not defined.
Service Information.....	Error! Bookmark not defined.

Introduction

This User Guide provides information OrbitGPS's Bluetooth GPS receiver.

OrbitGPS part number: G2010

The Bluetooth GPS receiver collects GPS satellite data and communicates information to mobile computer using Bluetooth. This GPS receiver has a user-replaceable internal battery that allows it to be used as a stand-alone receiver. It can also be mounted in a vehicle with the optional DC power cable and magnetized external antenna.



OrbitGPS's Bluetooth GPS receiver outputs GPS information as industry standard NMEA sentences which are compatible with most GPS software applications. It can also be configured to output GPS information in the SiRF Binary format.

OrbitGPS GPS receivers offer typical accuracies of 3-5 meters uncorrected, and 3 meters or better with Wide Area Augmentation System (WAAS) correction.¹ They are tested to comply with FCC and CE standards.

Note: Screens and windows pictured in this User Guide are samples and may vary.

Basic Guidelines

Safety

Read this User Guide and these basic guidelines comprehensively. Breaching the regulations and rules may be dangerous or illegal. Road safety is the first priority; do not handle or operate the Bluetooth GPS receiver while driving. Keep the GPS receiver away from high temperatures and fire. (See more details in the "Warning" section of this User Guide.)

¹ *Accuracy is subject to degradation based on environmental and positional conditions. Rated accuracy provides 95% Circle Error Probability (CEP) position accuracies of <5 meters with WAAS correction and <10 meters uncorrected.

Proper Handling

Operating the GPS receiver requires a clear and unobstructed view of sky with the top of the device pointing upward to the sky. Do not bend the connector or otherwise modify the charger or the Bluetooth GPS receiver.

First Time Operation

A longer than normal time-to-first-fix of position may result the first time you use the Bluetooth GPS receiver. Follow this user guide and consult the instructions of the host mobile computer and GPS application software.

Interference

GPS receivers may receive interference near cellular base-station and when in close proximity to mobile phone antennas. This interference may affect positioning and time-to-fix performance.

Connector & Jack

The Bluetooth GPS receiver has one external antenna (port) connector, and one DC power jack. Caution and care must be exercised when handling these parts. Bending or breaking these parts will severely degrade positioning performance and damage the receiver. This will void your warranty.

Accessories

Use only manufacturer approved accessories with the Bluetooth GPS receiver.

Service

There are no user-serviceable parts inside the receiver. See the “Service Information” section of this guide for service contacts.

Safety

The Bluetooth GPS receiver contains a Lithium-ion battery inside. Leaving the Bluetooth GPS receiver in hot or cold conditions, such as in a closed car in summer or winter conditions, will reduce the capacity and lifetime of the battery inside. Always try to keep the GPS receiver between +15C (+59F) and +25C(+77F). A GPS receiver with a hot or cold battery may temporarily not work, even when the battery is fully charged. The performance of Lithium-ion batteries is particularly limited in temperatures below 0C (+32F). Temperature extremes will affect the ability of your battery to charge. Allow the GPS receiver to cool down or warm up first.

Batteries must be recycled or disposed of properly. Batteries must not be disposed of in municipal waste.

DO NOT DISPOSE OF THE BLUETOOTH GPS RECEIVER IN A FIRE!

Charge the Bluetooth GPS receiver only with the charger supplied. When a charger is not in use, disconnect it from the power source. Do not leave the GPS receiver connected to a charger for longer than 24 hours, since excessive charging may shorten its life. If left unused, a fully charged battery will discharge itself over time.

CAUTION

RISK OF EXPLOSION IF BATTERY IS REPLACED BY AN INCORRECT TYPE.
DISPOSE OF USED BATTERIES ACCORDING TO THE INSTRUCTIONS.

Switch Off

Obey all laws, regulations, rules and restrictions. Switch off the host mobile computer and discontinue operation of the Bluetooth GPS receiver in hospital ICU, aircraft, gasoline station, near fuel or chemical, near blasting area, or other restricted areas.

Getting Started

First Steps

Before using the Bluetooth GPS receiver, check that the following tasks have been completed:

- The GPS application software is correctly installed in the host mobile computer
- The Bluetooth GPS receiver is fully charged
- Bluetooth is enabled in the host mobile computer
- The external antenna is installed, if needed
- The GPS receiver (or external antenna, if installed) has a clear view of the sky.

For information about the operation of the host computer and GPS application software installation procedures, please refer to the documentation that accompanies each product, respectively.

Connecting and Pairing the Bluetooth GPS receiver with the mobile computer

For full instructions on how to pair and connect your Bluetooth GPS receiver with the mobile computer, please consult and follow the user guide that comes with the host mobile computer.

First, turn on the power of host and Bluetooth GPS receiver, respectively.




- ▶ Turn on the power of the mobile computer.
- ▶ Turn on the power of the Bluetooth GPS receiver.

(Make sure the battery of the Bluetooth GPS receiver is fully charged or that the charger is attached and plugged in.)

LED Configurations

Once the Bluetooth GPS receiver is powered on and before pair/connection is achieved, the LED indicators will show as follows:



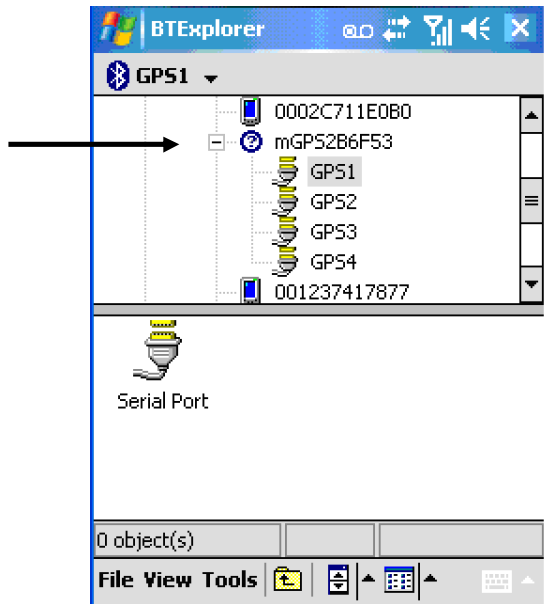
SYMBOL	COLOR	STATUS	DESCRIPTION
 Bluetooth	Blue	Blinking	1 times / 1 sec Search Bluetooth Device
			1 time / 1 sec Standby Mode
			1 time / 3 sec Transferring Data
 Battery	Red	Light on	Power too low
	Green	Light on	In charging
	N/A	Light off	Battery full or Not in charging
 GPS	Orange	Light on	Acquiring Satellites
		Blinking	Position Fixed

Establishing a Bluetooth connection example

The following example uses Stone Street One BTExplorer version 1.2.4. **Other Bluetooth management software screens and procedures may differ.**

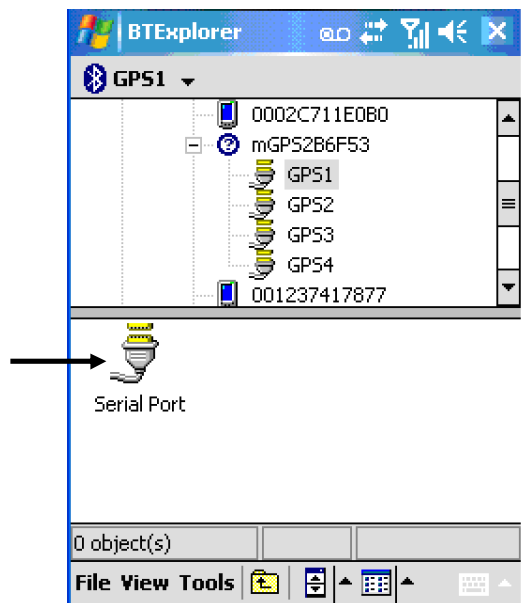
Step 1

Use the Bluetooth management software to discover devices. Then tap on the device name for the GPS receiver.



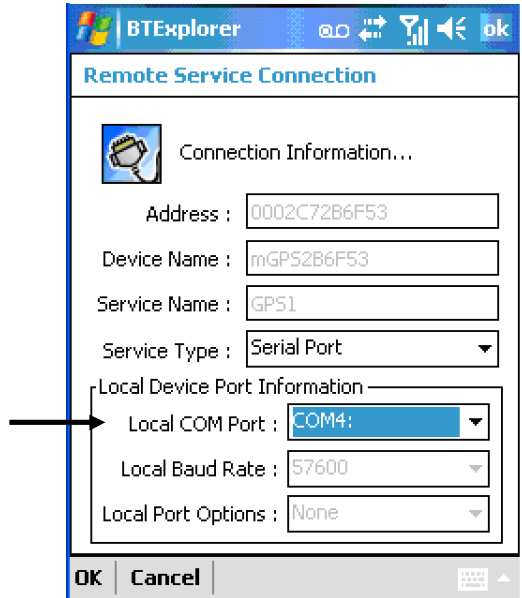
Step 2

Tap on the serial port icon to initiate the connection.



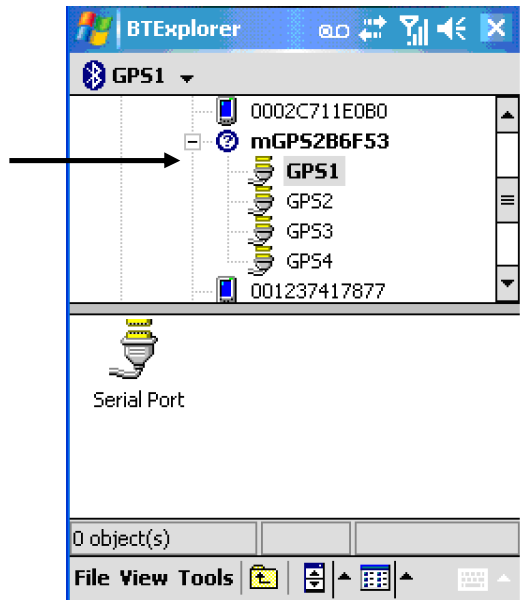
Step 3

Assign a COM port to the GPS receiver (if required). This is the COM port that will be used by the GPS application. Take care not to assign the GPS receiver to a COM port used by another application.



Step 4

If the name of the device is in bold text, the GPS receiver is connected to the host mobile computer.



Using the Bluetooth GPS Receiver with an existing GPS application

The Bluetooth GPS Receiver is designed to work “out-of-the-box” with GPS applications that accept data in the NMEA protocol format.

The National Marine Electronics Association regulates the NMEA 0183 specifications standard which defines a set of ASCII strings, called sentences, which relay GPS navigation information. This is the most commonly used standard for GPS communications.

To configure the Bluetooth GPS Receiver for use with a GPS application that supports the NMEA protocol, set the following parameters in the GPS application:

- **GPS Com Port or Com Port:** Choose the COM port you selected when you established the Bluetooth connection.
- **Baud Rate:** Enter the baud rate displayed when you established the Bluetooth connection.
- **Protocol:** NMEA (Depending on the GPS application, you may not be asked to enter the protocol.)
- **Device Passkey: 0000**

Once these parameters have been set, the GPS application should begin automatically receiving GPS data from the Bluetooth GPS Receiver. Please consult the GPS application documentation for further information on how to communicate with an attached GPS receiver.

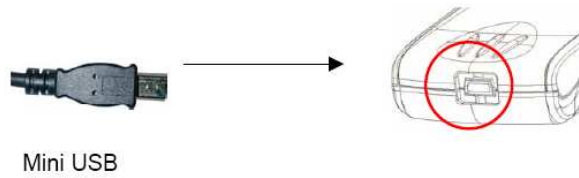
Using the Bluetooth GPS Receiver/ with the GlobalPoint GPS application

The GlobalPoint GPS application provides a means to confirm proper operation of the Bluetooth GPS Receiver and configure the mode of operation (NMEA or SiRF). Detailed instructions on how to use the GlobalPoint GPS application are included below.

The GlobalPoint GPS application can be downloaded at www.OrbitGPS.com/resources.html

Charging the battery of the Bluetooth GPS receiver

When the Red LED light is light on, you need to charge the Li-ion battery inside the Bluetooth GPS receiver by plugging the charger's plug into the power jack of the GPS receiver as illustrated below. Use only the approved OrbitGPS AC charger (Included with the receiver) or OrbitGPS's DC charger (G2011).



Using the optional external active antenna

Your Bluetooth GPS receiver can be optionally equipped with an external active antenna for convenient usage when operating inside a vehicle where satellite signals are blocked.

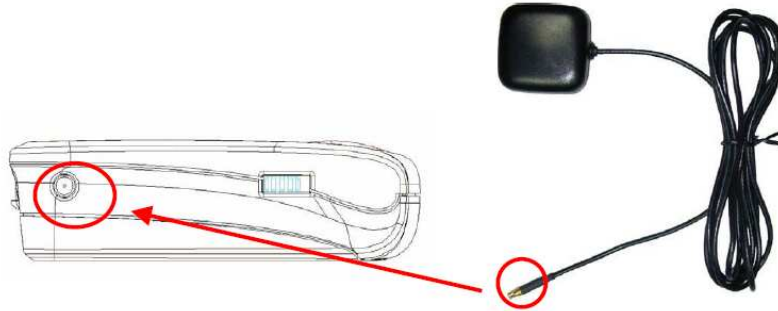
The active antenna has an embedded magnet in the bottom for easy mounting on metal surface. Do not put the antenna near to materials are sensitive to magnetic field, such as magnetic storage media like floppy diskettes. OrbitGPS part number is G2012.



Optional External Antenna

Connecting the external active antenna (optional)

Locate the external antenna port (MCX female) and then plug the connector (MCX male) of the external active antenna into the external antenna port, as indicated in below. Put the external active antenna on the roof metal surface of the car, or on the front top-surface of the dashboard, making sure that it will not affect driving safety. When mounting on the roof make sure that the antenna cable does not get pinched or cut as it is fed into the vehicle. Use only the active antenna supplied by OrbitGPS. Use of some other antenna may severely degrade positioning performance or damage the receiver.



Connect and install the external active antenna in position before driving. Do not manipulate the external antenna while steering on the road.

Care and Maintenance

The Bluetooth GPS receiver is a sophisticated product of superior design and craftsmanship, and should be treated with care. The suggestions below will help you to fulfill any warranty obligations. When using the GPS receiver and external active antenna:

- Keep GPS receiver and all accessories out of small children's reach.
- Keep GPS receiver dry. Humidity, liquids and precipitation contain minerals that will corrode its connector, jack, plug and electronic circuit boards.
- Use only the supplied and approved accessories. Unauthorized accessories, antenna, modifications or attachments could damage the GPS receiver and may violate regulations governing radio devices.
- Only use the charger supplied with for charging purpose. Use of some other charger may damage the GPS receiver and even lead to the risk of explosion.
- Use dry and clean soft cloth to clean the GPS receiver. Do not use harsh cleaning solvents, chemicals or strong detergents.
- Do not drop, shake or knock the GPS receiver. Rough handling can break the connector, jack and internal electronic circuit boards. Dropping the GPS receiver may break the connector and jack which will cause non-recoverable and malfunction damages.
- Do not expose to rain or high humidity environment, or even pour water on it, which will cause malfunction or non-recoverable damage.
- Do not store GPS receiver in dusty, dirty areas. Some parts, like connector pins and clips, can be damaged.
- Do not store GPS receiver in hot areas. High temperatures can shorten the life of electronic devices, and melt or drape certain plastics.
- Do not expose to high temperatures higher than 60°C (140°F) such as in a vehicle under direct sunshine.

- Do not store GPS receiver in cold areas. When the GPS receiver warms up to its normal operation temperature, moisture can aggregate inside it, which may severely damage electronic circuit boards inside.
- Do not attempt to open the GPS receiver. Unauthorized handling may damage the GPS receiver.
- Do not paint on the GPS receiver. Paint can clog the connector, jack, and prevent proper normal operation of the GPS receiver.

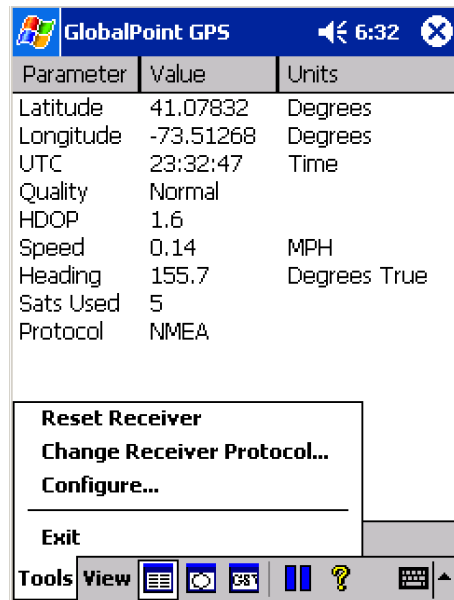
GlobalPoint GPS Software

The GlobalPoint GPS software provides a means to configure and confirm operation of the Bluetooth GPS Receiver. In the GlobalPoint GPS software you will be able to choose the mode of operation of the receiver and display positioning and performance information.

GlobalPoint GPS software can be downloaded at www.OrbitGPS.com/support.html.

Tools Menu Options

Use the **Tools** menu to access configuration options or to exit the program.



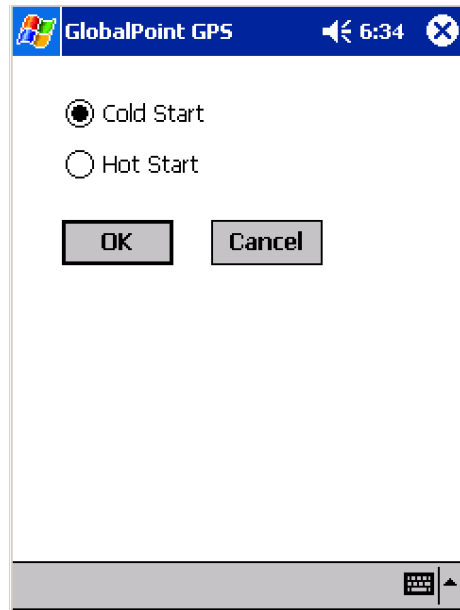
The tools menu contains the following options:

- Reset Receiver
- Change Receiver Protocol
- Configure
- Exit

Important Note: When first using the GlobalPoint GPS application, go to the **Configure...** option first to set up communication between the Bluetooth GPS Receiver and Symbol mobile computer.

Reset Receiver

Use the *Reset Receiver* option to select the Start Mode and begin a new initialization of the receiver.



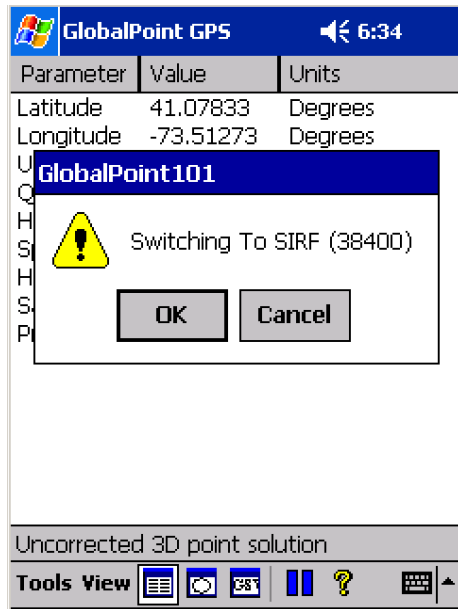
Cold Start causes the receiver to release any fix information and completely re-initialize navigation data (almanac, ephemeris, and clock). Typical "Time to First Fix" (TTFF) is 45 seconds or less.

Hot Start causes the receiver to keep existing navigation data and refresh the fix. Typical TTFF is 8 seconds or less.

Change Receiver Protocol

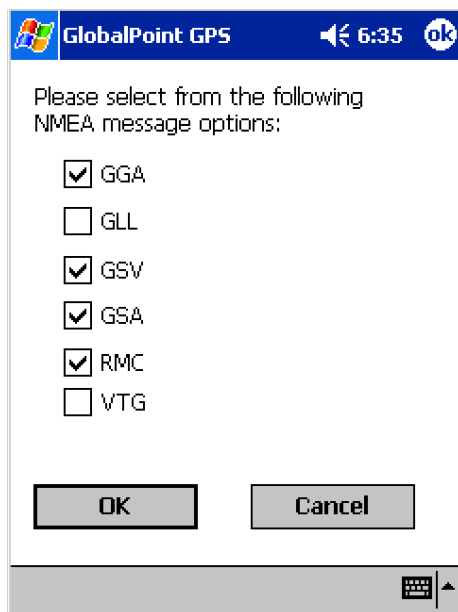
Change Receiver Protocol causes the receiver to switch between the two available modes of operation: NMEA or SiRF. NMEA is the default mode of operation for the Bluetooth GPS Receiver for the Symbol mobile computers.

When in NMEA mode, choose this option to switch to SiRF mode.



The GlobalPoint GPS application requires the user to confirm switching the mode of operation from NMEA to SiRF. To cancel the ***Change Receiver Protocol*** command, tap on “Cancel.”

When in SiRF mode, choose this option to switch to NMEA mode.



The GlobalPoint GPS application requires the user to confirm switching the mode of operation from SiRF to NMEA. To cancel the ***Change Receiver Protocol*** command, tap on “Cancel.”

The ***Change Receiver Protocol*** also allows the user to choose which NMEA sentences are to be communicated from the Bluetooth GPS Receiver to the mobile computer. The following NMEA sentences are supported by the Bluetooth GPS Receiver :

GSV

Set this NMEA sentence to the update interval for the GNSS Satellites in view.

GLL

Set this NMEA sentence to the update interval for the Geographic Position: Latitude and Longitude.

RMC

Set this NMEA sentence to the update interval for the Recommended Minimum Specific GNSS Data.

GSA

Set this NMEA sentence to the update interval for the GNSS DOP and Active Satellites.

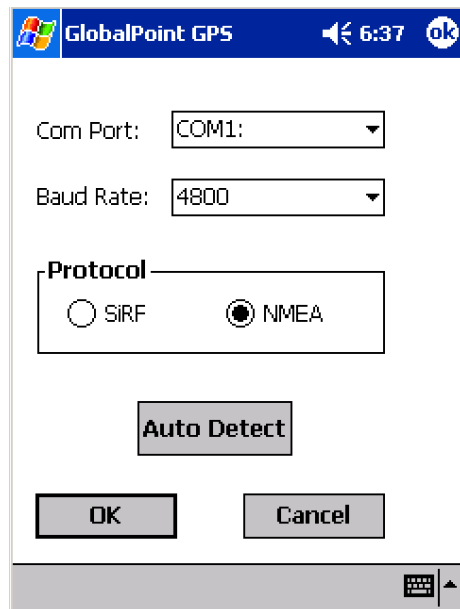
VTG

Set this NMEA sentence to the update interval for the Course Over Ground and Ground Speed.

The default NMEA sentences for the Bluetooth GPS Receiver are GGA, GSV, GSA and RMC.

Configure

Use this option to configure the connection between the Bluetooth GPS Receiver and the Symbol mobile computer.



Com Port

This value determines the PC communications port the GPS receiver is connected to

Baud Rate

This value determines the Baud Rate (or data transfer rate) at which the GPS receiver communicates with the mobile computer.

Protocol

This value determines the mode of operation to be used by the Bluetooth GPS Receiver.

Auto Detect

Use this option to have the GlobalPoint GPS application automatically detect the Com Port, Baud Rate and Protocol in use by the GPS receiver attached to the mobile computer.

OK and Cancel

Select "OK" to save the settings selected or "Cancel" to disregard any changes.

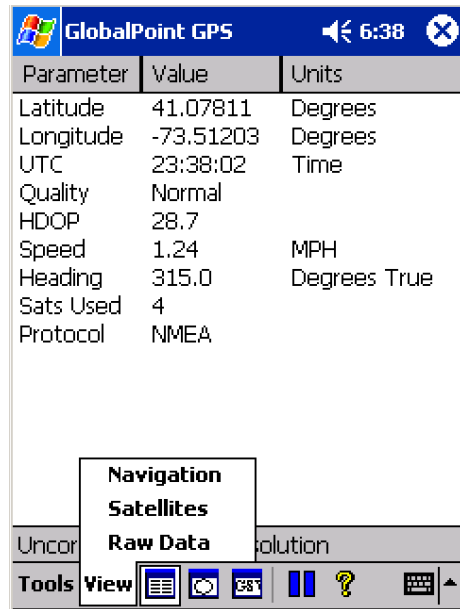
Exit

Use the *Exit* option to quit the GlobalPoint GPS application return to the Windows Mobile "Today" screen.

Important Note: To fully exit the GlobalPoint GPS application, the *Exit* option must be used. "Closing" the application by tapping on the "X" in the upper-right-hand portion of the screen will not exit the program, but cause it to be minimized where it will continue running in memory. If the GlobalPoint GPS application is running in memory, it will block other GPS applications from running properly on the mobile computer.

View Options

Use the **View** menu to choose how tracking information is displayed within the GlobalPoint GPS application.



The tools menu contains the following options:

- Navigation
- Satellites
- Raw Data

These options can also be selected by tapping on the following icons:



Navigation



Satellites



Raw Data

Fix Description

At the lower portion of the screen, just above the **Tools** menu, the GlobalPoint GPS application displays the type of fix currently acquired by the GPS receiver. This value can change over time as the receiver's viewable sky changes, or if the receiver is re-initialized. The types of fixes are:

- Invalid unavailable solution – This signifies that not enough satellite data is available to provide a fix. This occurs as the receiver is initialized or when an insufficient number of satellites are in the viewable sky.
- Corrected 3D point solution – This signifies that a three-dimensional GPS fix is available and that it is corrected using WAAS.
- Uncorrected 3D point solution - This signifies that a standard three-dimensional GPS fix is available.
- Uncorrected 2D point solution – This signifies that a two-dimensional GPS fix is acquired.

Navigation View

Use the “Navigation” view to display summary data for GPS fix information communicated from the GPS receiver.

Parameter	Value	Units
Latitude	41.07833	Degrees
Longitude	-73.51272	Degrees
UTC	23:30:14	Time
Quality	Normal	
HDOP	1.6	
Speed	0.31	MPH
Heading	155.7	Degrees True
Sats Used	5	
Protocol	NMEA	

Uncorrected 3D point solution

Tools View

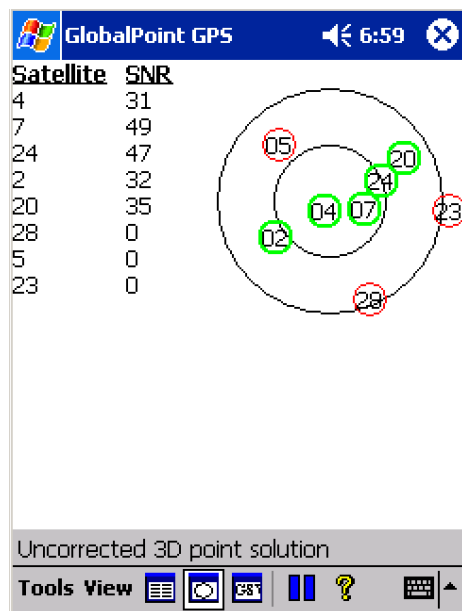
Parameters displayed in the Navigation view are:

- **Latitude** – Displays the current location on the face of the Earth north or south of the Equator. Latitude is an angular measurement ranging from 0° at the Equator to 90° at the poles (90° N or 90° S). In the GlobalPoint GPS application, **North** is shown as a positive value and **South** is shown as a negative value.
- **Longitude** – Displays the current location on the face of the Earth east or west of a north-south line called the Prime Meridian. Longitude is an angular measurement ranging from 0° at the Prime Meridian to +180° eastward and –180° westward. In the GlobalPoint GPS application, **East** is shown as a positive value and **West** is shown as a negative value.
- **UTC** – “Coordinated Universal Time or UTC,” is the equivalent of Greenwich Mean Time, the astronomical basis for civil time.

- **Quality** – Displays whether current fix is a “Normal” uncorrected fix or a WAAS “Corrected” fix.
- **HDOP** – “Horizontal Dilution Of Precision” is a measure of how the satellite geometry influences the latitude and longitude data accuracy. A good satellite geometry and hence a good accuracy is obtained if the satellites being tracked are located as far away from each other as possible, while the geometry is poor if the satellites are located close to each other. If the HDOP value is higher than about 10 the latitude and longitude data likely to be inaccurate.
- **Speed** – Displays the current velocity in miles per hour.
- **Heading** – Displays the current direction of travel in degrees with North being 0°.
- **Sats Used** – The number of satellites used in the current fix.
- **Protocol** – The current mode of operation. This can be SiRF or NMEA.

Satellites View

Use the “Satellite” view to display summary data about the available satellites in the viewable sky.



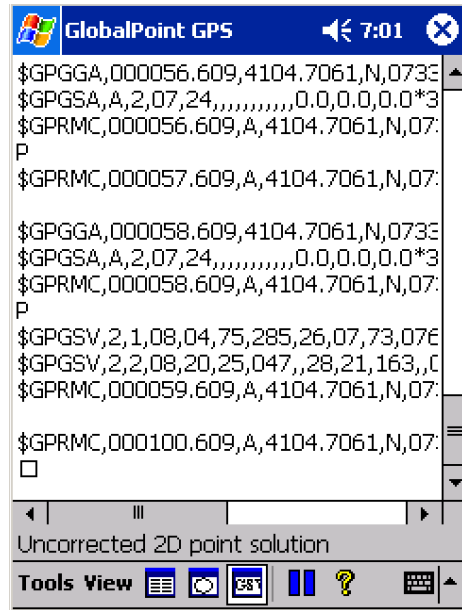
Parameters displayed in the Navigation view are:

- **Satellites** – This column displays all satellites available in the viewable sky by the identifying number of each satellite as determined by the GPS authorities.
- **SNR** - This value indicates the carrier signal to noise ratio for the signal received by the individual satellite. Typically, satellites with SNR values below 28 are not used in GPS fixes.

- **Satellite Sky Map** – This graphic image displays the relative position of the viewable satellites overhead.

Raw Data View

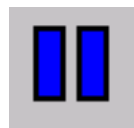
Use the “Raw Data” view to display raw GPS signal data being received by the GPS receiver.



Additional Options

Pause

Tapping the “Pause” icon temporarily pauses the GPS data stream being received by the GPS receiver. To resume the GPS data stream, tap on the pause icon. When active, the pause icon will have a gray background. When paused, the icon will have a white background.



Pause Icon (unpaused)



Pause Icon (paused)

Specifications

Chipset

GPS Chipset:	SiRFstar III
Chipset Processor:	ARM7/TDMI – 49MHZ

Receiver

Frequency:	L1, CA code
Signal Acquisition:	1920 time/frequency search channels
Channels:	20 Channels; all-in-view tracking
Max. Update Rate:	10Hz
Sensitivity:	-159dBm
DGPS Source:	Default: None
DGPS Programmable:	WAAS/EGNOS
System Back Up:	Built-in Lithium-Ion rechargeable battery
Antenna Type:	Built-in Antenna (external antenna optional)

Position/Time Accuracy (without SA)

Autonomous:	<10 m
WAAS	<5m
Velocity:	0.1 meters/second
Time:	1 microsecond synchronized to GPS time
Datum:	WGS-84

Acquisition Rate

Reacquisition:	100msec
Hot Start:	<1 second
Warm Start:	<38 seconds
Cold Start:	<42 sec

Protocol

Default:	NMEA-0183 (V2.20)- GGA(1), GSA(1), GSV(5), RMC(1)
Programmable:	Additional NMEA- VTG, GLL / SiRF Binary

Power

Draw:	80mA at 3.3V; DC power adaptor
Internal Battery:	3v (for GPS module only)

Dynamic Conditions

Altitude:	<18,000 meter
Velocity:	< 515 meter/second
Acceleration:	<4g

Environmental

Operating Temperature:	-20°C to +60°C
Storage Temperature:	-40°C to 70°C
Humidity:	5% to 95%, non-condensing

Regulatory

Marks:	FCC, CE, RoHS
--------	---------------

Dimensions

Depth:	66 mm
Width:	46 mm
Height:	19 mm
Weight:	56g

Part Number

OrbitGPS part number:	G2010
-----------------------	-------

Accessories

G2011	12V DC Cig. Lighter Adaptor.
G2012	Magnetized External Antenna.

Regulatory Information

Statement of compliance

OrbitGPS hereby declares that this device is in compliance with the essential requirements and other relevant provisions of Directives 1999/5/EC, 89/336/EEC and 73/23/EEC. Declaration of Conformities may be obtained from OrbitGPS on request.

The GLOBALPOINT GPS has been tested to and found to comply with the following standards for use within the Economic Union:

EMC Directive 89/336/EEC:

EN 55022:1998

EN 55024:1998 + A1:2001

R&TTE Directive 99/5/EC:

EN 301 489-3 V1.4.1 (2002-08)

Low Voltage Directive 73/23/EEC:

IEC 60950-1 1st Edition 2001 (National and group differences in accordance with CB Bulletin No. 109A December 2005)

The GLOBALPOINT GPS has also been tested and found to comply with:

Title 47 of the CFR:2004, Part 15, Subpart (b)

Class B Radiated Electric Field Emissions and Power Line Conducted Emissions

The GLOBALPOINT GPS complies with:

RoHS Directive 2002/95/EC

Warranty

(a) OrbitGPS's hardware Products are warranted against defects in workmanship and materials for a period of twelve (12) months from the date of shipment by OrbitGPS's reseller to its customer, but in no event more than fifteen (15) months from shipment of the Products by OrbitGPS, unless otherwise provided by OrbitGPS in writing, provided the Product remains unmodified and is operated under normal and proper conditions. Warranty provisions and durations on software, integrated installed systems, Product modified or designed to meet specific customer specifications ("Custom products"), remanufactured products, and reconditioned or upgraded products, shall be as provided in the applicable Product specification in effect at the time of purchase or in the accompanying software license; (b) Spare parts (i.e. Parts, components, or subassemblies sold by OrbitGPS for use in the service and maintenance of Products) are warranted against defects in workmanship and materials for a period of thirty (30) days from the date of shipment. Spare parts may be new or originate from returned units under the conditions set forth in subsection (d) below; (c) For repairs on OrbitGPS-branded hardware Products under this Agreement, including repairs covered by warranty, the repair services provided are warranted against defects in workmanship and materials on the repaired component of the Product for a period of thirty (30) days from the shipment date of the repaired Product, or until the end of the original warranty period, whichever is longer; and (d) Products may be serviced or manufactured with parts, components, or subassemblies that originate from returned products and that have been tested as meeting applicable specifications for equivalent new material and Products. The sole obligation of OrbitGPS for defective hardware Products is limited to repair or replacement (at OrbitGPS's option) on a "return to service depot" basis with prior

OrbitGPS authorization. Solution Provider is responsible for shipment to OrbitGPS and assumes all costs and risks associated with this transportation; return shipment to the Solution Provider will be at OrbitGPS's expense. Solution Provider shall be responsible for return shipment charges for product returned where OrbitGPS determines there is no defect ("No Defect Found"), or for Product returned that OrbitGPS determines is not eligible for warranty repair. No charge will be made to Solution Provider for replacement parts for warranty repairs. OrbitGPS is not responsible for any damage to or loss of any software programs, data or removable data storage media, or the restoration or reinstallation of any software programs or data other than the software, if any, installed by OrbitGPS during the manufacture of the Product; (e) Except for the warranty applying solely to the repaired component arising from a repair service as provided in (c) above, the aforementioned provisions do not extend the original warranty period of any Product that had either been repaired or replaced by OrbitGPS; (f) The above warranty shall not apply to any Product (I) which has been repaired, tampered with, altered or modified, except by OrbitGPS's authorized service personnel; or (II) in which the defects or damage to the Product result from normal wear and tear, misuse, negligence, improper storage, water or other liquids, battery leakage, use of parts or accessories not approved or supplied by OrbitGPS, or failure to perform operator handling and scheduled maintenance instructions supplied by OrbitGPS; (III) which has been subjected to unusual physical or electrical stress, abuse, or accident, or forces or exposure beyond normal use within the specified operational and environmental parameters set forth in the applicable Product specification; nor shall the above warranty provisions apply to any expendable or consumable items, such as batteries, supplied with Product. EXCEPT FOR THE WARRANTY OF TITLE AND THE EXPRESS WARRANTIES STATED ABOVE, ORBITGPS DISCLAIMS ALL WARRANTIES ON PRODUCTS FURNISHED HEREUNDER INCLUDING ALL IMPLIED WARRANTIES OF MERCHANTABILITY AND FITNESS FOR A PARTICULAR USE. ANY IMPLIED WARRANTIES THAT MAY BE IMPOSED BY LAW ARE LIMITED IN DURATION TO THE LIMITED WARRANTY PERIOD. SOME STATES OR COUNTRIES DO NOT ALLOW A LIMITATION ON HOW LONG AN IMPLIED WARRANTY LASTS OR THE EXCLUSION OR LIMITATION OF INCIDENTAL OR CONSEQUENTIAL DAMAGES FOR CONSUMER PRODUCTS. IN SUCH STATES OR COUNTRIES, FOR SUCH PRODUCTS, SOME EXCLUSIONS OR LIMITATIONS OF THIS LIMITED WARRANTY MAY NOT APPLY. The stated express warranties are in lieu of all obligations or liabilities on the part of OrbitGPS for damages, including but not limited to, special, indirect or consequential damages arising out of or in connection with the use or performance of the Product or service. OrbitGPS's liability for damages to Solution Provider or others resulting from the use of any Product or service furnished here under shall in no way exceed the purchase price of said Product or the fair market value of said service, except in instances of injury to persons or property.

To the fullest extent allowed by law, the warranties and remedies set forth in this agreement are exclusive and in lieu of all other warranties terms or conditions, express or implied, either in fact or by operation of law, statutory or otherwise, including without limitation warranties terms or conditions of/as to satisfactory quality, merchantability, fitness for a particular purpose, conformance to contract, correspondence with description and non-infringement, all of which are expressly excluded. OrbitGPS's warranties herein are granted only to Distributor, and are not extended to any third parties that, for the avoidance of doubt, include any resellers, agents or dealers of Distributor.

OrbitGPS neither assumes nor authorizes any other person to assume for it any other liability in connection with the sale, installation, maintenance or use of its products, and OrbitGPS provides no warranty whatsoever for any non-standard Products supplied by it hereunder.

ORBITGPS SHALL NOT BE LIABLE UNDER THIS WARRANTY IF ITS TESTING AND EXAMINATION DISCLOSE THAT THE ALLEGED DEFECT IN THE PRODUCT DOES NOT EXIST OR WAS CAUSED BY DISTRIBUTOR'S, OR DISTRIBUTOR'S RESELLER, OR END USER'S, OR ANY THIRD PERSON'S MISUSE, NEGLIGENCE, IMPROPER INSTALLATION OR TESTING, UNAUTHORIZED ATTEMPTS TO REPAIR, OR ANY OTHER CAUSE BEYOND THE INSTALLATION OR TESTING, UNAUTHORIZED ATTEMPTS TO REPAIR, OR ANY OTHER CAUSE BEYOND THE RANGE OF THE INTENDED USE, OR BY ACCIDENT, FIRE, LIGHTNING OR OTHER HAZARD.

Service Information

Before you use the Bluetooth GPS receiver, it must be configured to operate with your mobile computer and applications. If you have a problem using the Serial GPS receiver, contact your facility's Technical or Systems Support. If there is a problem with the equipment, they will contact the OrbitGPS Support Center:

Email: support@OrbitGPS.com

For the latest version of this guide go to <http://www.OrbitGPS.com/support.html>

OrbitGPS
25 Old King's Highway North Suite 13#128
Darien, CT 06820
USA
www.OrbitGPS.com

© 2008, OrbitGPS LLC